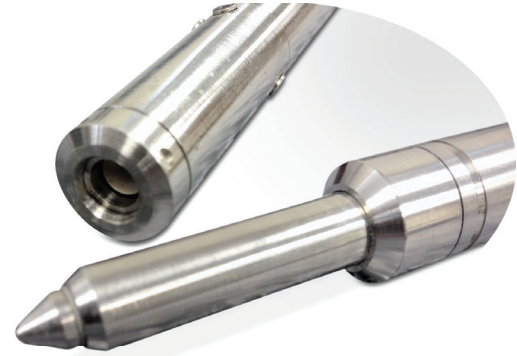


## ELITE Wet Mate Electric (WME) Series

### General Description and Advantages

- Pressure Balanced Oil Filled (PBOF)
- Wet Mate Electric Connector
- Design Life 25 Years
- Inconel Standard, Stainless and Titanium Available
- High Pressure Fittings With Metal Seals
- Two Barriers to Seawater Ingress
- Glass Sealed Header, No Welds



- Full Pressure Barrier Between Connector and Cable Termination
- For Use in Subsea XT's and Specialty Applications
- Plug and Receptacle Fully Protected in PBOF Environment

Design Parameters	Materials and Performance
	<b>Electric</b>
Material Specification	Inconel Nominal, 316LSS, Titanium Available
Design Life	25 Years
Number of Circuits	3 Electrical
Design Pressure	15,000 psi
Helium Leak – Pressure Header	$\leq 10^{-8}$ scc/sec
Test Pressure	20,000 psi
Environmental Operating Temperature	150°C
Voltage	500 VDC
Amperage	5A
Dimensions	.62" (15.8mm) Diameter
Mate Cycles	50 Mate/Demate

#### Hermetic Seal Corp

4232 Temple City Blvd • Rosemead, CA 91770, USA  
Telephone: +1 626-443-8931 • Fax: +1 626-443-6610  
[www.ametekinterconnect.com](http://www.ametekinterconnect.com)